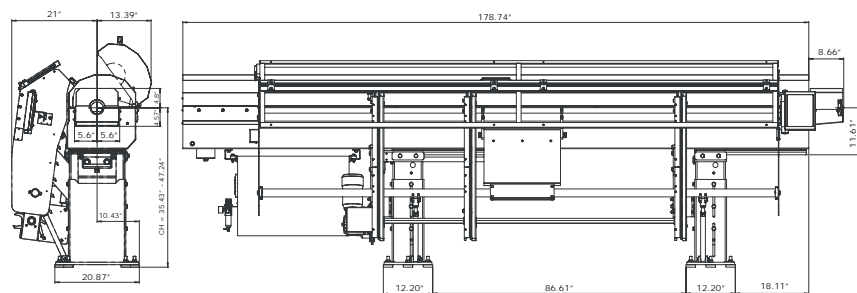


Features and Benefits

- Automatic bar loader capable of hydrodynamic or hydrostatic operation
- Servo drive with absolute encoder provides full flexibility for bar feeding
- Self-opening hydrostatic support, pressurized oil film supports the rotating bar and permits optimum spindle speeds
- Rugged compact design withstands the abuse of large bar stock turning at high RPM
- Standard remnant ejection through the chuck of the lathe, minimized loading time, increased productivity
- Optional remnant retraction system, bar end is extracted from the lathe and deposited into a storage drawer
- 2 minutes or less for partial changeovers within the diameter range
- 8 minutes or less for complete changeover, fast and easy, reduces downtime and increases productivity
- Prompting remote control, menu driven, guides you through setup
- Hydrostatic front stabilizer, permits increased RPM, enhanced productivity and surface finish, extended tool life



Technical Specifications

Bar Diameter:	
Sprint 552 Bar Diameter:	1/4" to 2" (5mm-52mm)
Sprint 565 Bar Diameter:	1/4" to 2-1/2" (5mm-65mm)
Bar Length:	40" to 12' 6"
Loading System:	Chain Elevator
20" Z-Axis Retraction	
Loading Capacity:	
Sprint 552:	11 Bars
Sprint 565:	9 Bars
Weight:	3,080 lbs.
Front or Rear Load Available	
Options:	
Automatic Front Stabilizer	
Remnant Retract:	
Sprint 552	Bar diameter 2" maximum without bar preparation
Sprint 565	Bar diameter 2.44" (62 mm) maximum without bar preparation. Bar diameter exceeding 2.44" (62 mm) requires bar preparation.
Remnant Length:	4.35" - 17.7" (110 mm - 450 mm)
25" Extended lower rack magazine	

Hydrobar Sprint

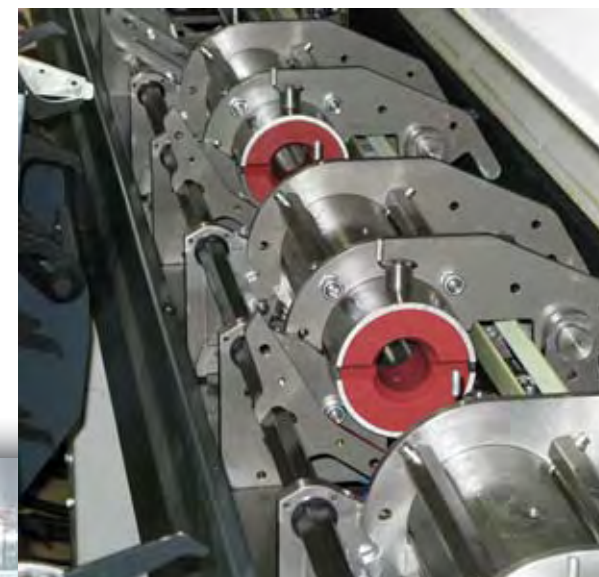
Automatic Magazine Bar Loader for 12' Bar Stock

Used with Fixed or Sliding Headstock Machines

Sprint 552 Model - Barstock diameters 1/4" to 2" (5 mm - 52 mm)

Sprint 565 Model - Barstock diameters 1/4" to 2-1/2" (5 mm - 65 mm)

Robust design combined with high rate cutting speeds for improved productivity



LNS America is your one-stop resource for industry leading bar feeding equipment and accessories, chip conveyors, coolant management systems and automatic work support (steady rest) systems. So you get unmatched product range, applications experience, service and support.

The LNS America customer service and technical support teams are the industry's most experienced. Together, they provide expert product selection and application assistance, professional installation and comprehensive training.

We support every product we sell with replacement parts, and both field and factory service. We provide this expert service through trained technicians who are strategically positioned throughout North America. And because we design every bar feed, chip conveyor and coolant system we sell, we can provide parts and service for all LNS & Turbo equipment – even chip conveyors and bar feeds that have been in service for over twenty years.



LNS America, Inc.
4621 East Tech Drive
Cincinnati, OH 45245

Phone : 513-528-5674 • Fax : 513-528-5733
sales@LNS-america.com • www.lnsamerica.com

Specifications subject to change without notice.
© 2009 LNS America Inc., printed in the USA.

Member of the LNS Group

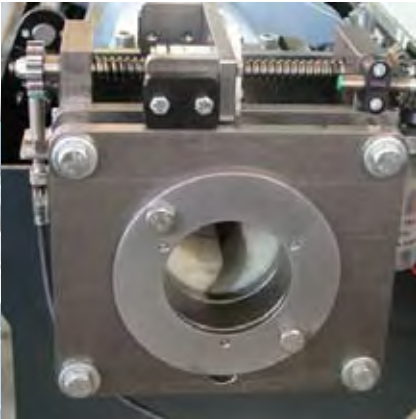


HYDROBAR SPRINT 552
HYDROBAR SPRINT 565

The Sprint series Hydrobar Sprint 552 and Hydrobar Sprint 565 offer a compact robust design with a heavy duty frame to support high performance with minimal vibration for improved productivity. The Hydrobar Sprint 552 and Hydrobar Sprint 565 are the only barfeeds capable of hydrodynamic or hydrostatic operation. The hydrostatic front stabilizer, permits increased RPM*, enhanced productivity, surface finish and extended tool life for fixed or sliding headstock machines.

Precise Performance with Minimal Vibration

When running round bar stock at optimum RPMs, it is vital to minimize bar vibration for production to operate efficiently.



The Hydrobar Sprint 552 and Hydrobar Sprint 565 feature a compact design with all steel machined parts assembled on a heavy duty frame for improved rigidity and performance. Coupled with the heavy duty frame design and depending on production needs, the Hydrobar Sprint 552 and Hydrobar Sprint 565 offer a hydrostatic or hydrodynamic guiding support with or without remnant retract or with an automatic front rest to guarantee optimum RPMs* without vibration for the entire range of diameters.

The automatic front stabilizer prevents troublesome bar vibrations from transferring to the machine cut area. And, it adjusts automatically to the bar and pusher diameters simply by inputting the bar stock diameter into the control menu.

Maximizing Productivity

Reducing downtime during changeover increases productivity which contributes to achieving your customer's demands.

Complete diameter changeover for the Sprint series Hydrobar Sprint 552 and Hydrobar Sprint 565 can be achieved in less than eight minutes.



The hydrodynamic and hydrostatic bearing elements are easily accessible, which makes handling them quite simple.

The operator can change the guiding element manually in a matter of seconds with no tool required. With this kind of changeover speed, you can quickly and competitively meet customer demands.

Just install the appropriate guiding elements and follow the prompting remote control menu. After the parameters have been entered in the control menu, the Hydrobar Sprint 552 and Hydrobar Sprint 565 automatically adjust.

The Hydrobar Sprint 552 and Hydrobar Sprint 565 components are interchangeable with those of the Hydrobar Sprint 555.

Minimize Loading Time

Standard remnant ejection through the chuck of the lathe minimizes loading time and increases productivity. Running unattended operation through a weekend allows you to stay ahead of the competition.



The bar stock remnant disposal option allows you to choose whether the new loaded bar should push the remnant through the lathe's chuck or the remnant should be ejected into a storage drawer at the rear of the magazine bar loader. An optional 25" wide horizontal floor mounted storage provides additional storage capacity which allows the system to run unattended for longer periods of time. Front or rear load available for optimum utilization of floor space when loading magazine tray.

***Barstock Straightness Specifications**

For optimum rotational performance, bar stock straightness needs to be .020" per 3.25 feet, non accumulative. Barstock out of this tolerance will not run at optimum RPM. Other factors such as material type (brass, copper, bronze and other malleable materials), clamping efficiency of the machine workholding, alignment of the barfeed, oil type, bar preparation and spindle liners will affect optimum RPM capability of the system.

Intelligent, User Friendly Remote Control

The latest PLC generation offered with the Hydrobar Sprint 552 and Hydrobar Sprint 565 is user friendly and production efficient.

To control the torque and speed, all you need to do is enter the bar diameter and length of the workpiece in the remote control. This operation takes approximately fifteen seconds and adjustments are made automatically. No manual adjustments are required.



Safe Loading System Providing Unattended Operation

Operators lifting heavy barstock while loading to the working height can be hazardous and decreases production time.



Both the Hydrobar Sprint 552 and Hydrobar Sprint 565 offer a standard chain loading system safely holding bars for unattended operation eliminating the need to lift heavy bars to the center height of the lathe for reloading. Additional barstock can be easily and safely loaded onto the chain loading system without production interruption.

Providing longer run times, the Hydrobar Sprint 552 can run unattended holding eleven bars and the Hydrobar Sprint 565 holds nine bars.

