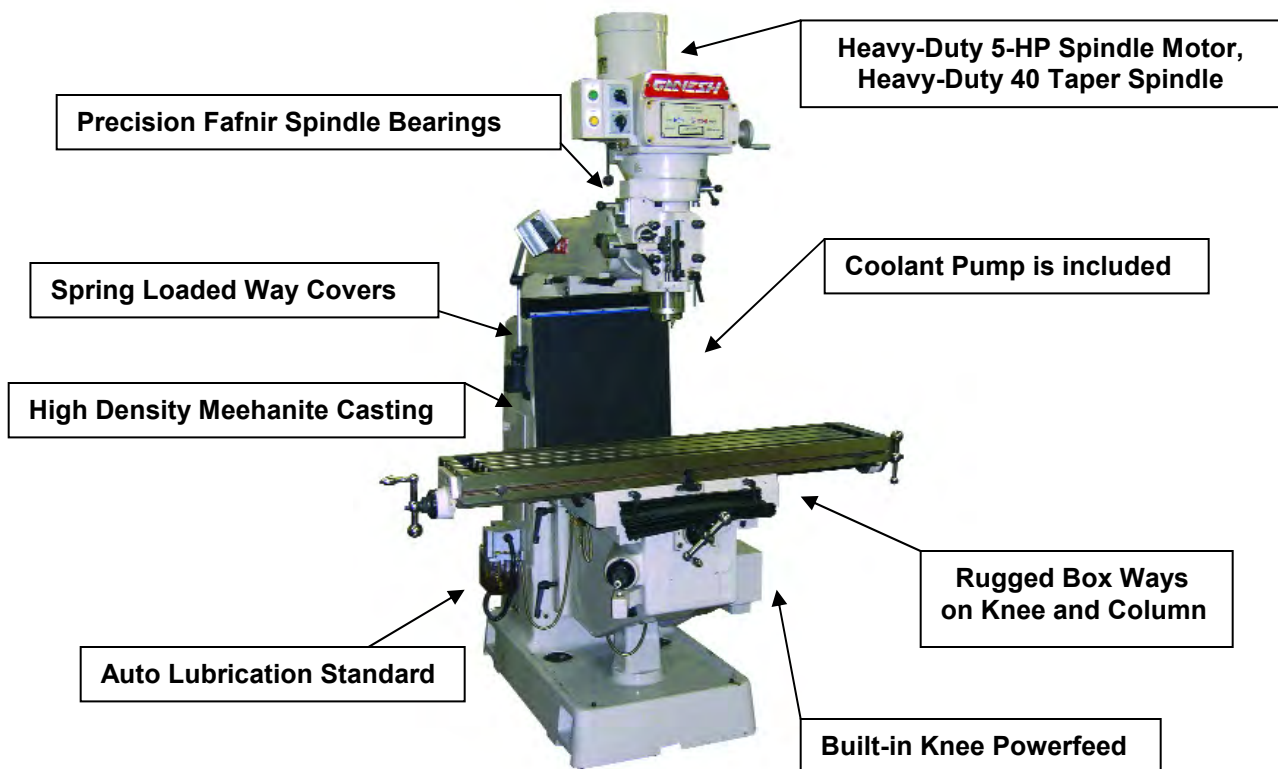


GANESH MACHINERY

The Ganesh **GMV-4 12" X 54"** Heavy-Duty Variable Speed Milling Machine is built to the highest conventional milling machine standards in the industry, and we are very confident that this high quality and feature packed machine provides the very best value in the marketplace. Even the manual milling machines from Ganesh are designed for the demanding continuous duty usage that CNC retrofits require. The Meehanite castings that we use are of the highest quality; with over twice the tensile strength offered by others, for increased wear resistance and providing for superior cutting load capability and improved tool life and surface finish. The Ganesh milling machines not only include many features that are optional on competitive machines, but offer features that are not even available on other machines. The build quality and attention to detail are unequalled in the industry and the technical support Ganesh offers their customers is unsurpassed. Ganesh also offers 2-axis and 3-axis CNC milling machines in our deluxe milling machine series. If you require information on these machines, or on the extensive Ganesh line of manual or CNC machines please let us know.

GANESH Super Precision GMV-4 12"X 54" Heavy-Duty Milling Machine W/ Class-7 Super Precision Fafnir Spindle Bearings and Box Ways



****5-HP SPINDLE MOTOR AND 40-TAPER SPINDLE
FOR SUPERIOR PRECISION METAL REMOVAL CAPABILITY****

STANDARD GANESH GMV-4 MACHINE FEATURES:**Machine Construction:**

- Meehanite Castings, fine grain and high density cast iron using the superior Meehanite process yields superior vibration dampening and improved surface finish and tool life
- Exclusively designed built-in leveling ledge to level machine low to ground

Bed ways:

- Turcite-B Premium *Red Furon* Coated way surfaces (*Made in USA*)
- Hardened and Ground extra wide Box Way saddle for heavy-duty cutting performance
- Hardened and Ground Square Box Ways on Column and Knee
- Hardened and Ground Machine Table for enhanced wear resistance

Spindle:

- 5-HP Spindle Motor and #40-taper spindle for superior metal removal capability
- Fafnir ABEC Class-7 matched *Super Precision* spindle bearings (*Made in England*)
- Hardened, ground and polished precision Back Gear for quiet spindle operation
- Two high-output fans on spindle motor to provide extra cooling for a long service life
- Forward/ Reverse spindle switch housed in an oil-tight switch box
- 4,000-RPM Spindle with 0.0002" maximum spindle runout –

Quill:

- Power quill feed with 3-feeds and adjustable feed stop & automatic feed trip release
- Hardened and Ground Quill – Hard chrome plated for a long service life
- Quill return spring (*Made in USA*)

Machine Features:

- Hi -Torque knee powerfeed included to enhance operator efficiency
- Multiple knee and table locks for superior rigidity
- T-slots ground to 0.625" to fit standard workholding nuts
- Automatic Metered Lubrication for slideways and lead screws
- Spring Loaded way cover is included for added safety and protection of machine
- Built-in coolant pump is included
- Chip-Tray is included
- Water resistant halogen lamp is included
- Inspection Report on accuracy, Instruction Manual, Tools and Tool Box all included
- Large compliment of parts and accessories in stock to ensure continued operation



GANESH MACHINERY

CELEBRATING 26 YEARS IN BUSINESS – 1985 TO 2010

STANDARD GANESH GMV-4 MACHINE SPECIFICATIONS:

TABLE –

Table Size:	12" X 54" (254mm X 1270mm)
Table Travel / (With Power Feed)	36" (914mm) / 32" (812mm)
Table Capacity	1200 lbs
T-slot width (Ground)	3 at 5/8" ground width (15.9mm)

MACHINE TRAVELS & CAPACITY –

Table Travel / (With Power Feed)	36" (914mm) / 32" (812mm)
Cross Travel	16" (406mm)
Ram Travel	17.7" (450mm)
Knee Travel	16" (406mm)
Spindle nose to table distance	3-1/4" – 19-5/8" (82.55 mm – 498.5 mm)
Spindle Nose-to-Table Travel	2" – 18" (50 - 457mm)
Quill Travel – Manual & Power Feed	5" (127mm)
Quill feeds – With Trip Release	0.0015", 0.003", 0.006" (0.038mm, 0.076mm, 0.152mm)
Quill Diameter	4.56" (105mm)
Leadscrews rolled and ground pitch (X & Y)	200" per rev. (5mm)
Adjustable scale ring resolution	0.001" (0.0254mm)
Ways	Hardened & Ground Box Ways
Box Ways – Cross Slide to Knee	Hardened & ground square ways
Box Ways – Knee to Column	Hardened & ground square ways

SPINDLE HEAD –

Head tilt (Left-to-Right)	90 – 0 – 90 degrees
Head tilt (Front-to-Back / Up-Down)	45 – 0 – 45 degrees
Head Swivel	360-degrees
Spindle Motor	5-HP, 3-Phase 208–240 vac, (5-HP option)
Spindle Taper	40-taper
Spindle Runout	0.0002" maximum runout (0.005mm)
Spindle Bearings	Fafnir ABEC-7 matched set of Class-7 bearings
Variable Speed Drive - Dual Range	80 - 520 rpm (low-range) / 600 - 4000 rpm (high-range)

Note: 5,000-RPM Spindle available w/ the optional AC Inverter Spindle Head

DIMENSIONS & WEIGHT –

Power Requirements	3-Phase 220 vac @ 44-amps, 440 vac @ 22-amps
Coolant Capacity	11-Gallons (41 liters)

THESE BASIC ACCESSORIES ARE INCLUDED WITH EVERY MACHINE

Motorized Knee Power Feed
Spring Loaded Way Covers
2-Cooling Fans in Spindle Head
Halogen Work Light
Automatic Lubrication System
Coolant Pump & Nozzle
Chip Tray

(Hi-Torque knee powerfeed included with each machine)

GMV-4 Special Value Package (GMV-4/P1) includes:

- *2-axis NEWALL OR FAGOR INNOVA Super Precision Digital Readout system*
- *Powerpac Hi-Torque X-axis Powerfeed (650 in/lb torque)*
- *Installation of DRO and Powerfeed unit*

GMV-4 Special Value Package (GMV-4/P2) includes:

- *3-axis NEWALL OR FAGOR INNOVA Super Precision Digital Readout system*
- *Powerpac Hi-Torque X-axis Powerfeed (650 in/lb torque)*
- *Powerpac Hi-Torque Y-axis Powerfeed (650 in/lb torque)*
- *Installation of DRO and Powerfeed unit*
- *40-taper Toolholder set, 9-pieces*

Note: The factory installed DRO units in the above listed Special Value Packages feature a 3-year no-fault warranty.

ASK FOR A QUOTE ON THESE MACHINES WITH A CNC PACKAGES!!

Machine Options

100-0034R	4" Riser
100-0038R	8" Riser
100-UP440	Wiring to 440 volts
100-PAM48	Phase-A-Matic 4-8HP Static Phase Converter
100-PAM5R	Phase-A-Matic 7.5 HP Rotary Phase Converter
100-ACD40	AC Inverter Drive (5,000 RPM Spindle)
100-BS254	X and Y axis Ball Screws

Machine Productivity Enhancement Options

100-HTPFX	Hi-Torque X-axis Longitudinal Powerfeed
100-HTPFY	Hi-Torque Y-axis Cross Powerfeed

100-SXP15	Servo X-axis Powerfeed, 150 in/lbs. Torque
100-SYP15	Servo Y-axis Cross Powerfeed
DRO-MQDRO	Mitutoyo Digital Readout DRO for Quill
100-DRO2A	2-Axis Digital Readout (Choice of Newall, Fagor, or Anilam)
100-DRO3A	3-Axis Digital Readout (Choice of Newall, Fagor, or Anilam)



**NEW FAGOR INNOVA DIGITAL
READOUT WITH LCD SCREEN
(AVAILABLE IN YOUR PACKAGES)**

- High Resolution TFT Color Screen
- Solid Graphics with Sectional Views
- Conversational Graphic Help Screens
- Pocket, Bolt-hole, Linear & Matrix Cycles (Milling)
- 3-D milling simulation, Taper calculation, Axis coupling
- Customizable for Milling, Boring, Turning, Grinding etc.
- 50 work offsets (Milling), Multiple Tool offsets (16 sets)
- Built-In calculator with auto recall
- Part centering, Part alignment, Angle calculation in the plane
- **USB** port for easy communication and software updates



100-APD40 Powerpac Air Power Drawbar
(Save Time – Save Money) Operators will save time by changing the tools quickly

Tooling & Work Holding Options



100-KD675	KURT 6" D-675 Milling Machine vise (USA)
100-DK688	KURT 6" D-688 Mill Vise (8.8" Opening) (USA)
100-SWVKD	Swivel Base for Kurt Mill Vise (USA)
100-ALV06	6" Angle-Lock vise w/swivel base (TAIWAN)



100-HRV06	6" Horizontal/Vertical Rotary Table
100-HRV08	8" Horizontal/ Vertical Rotary Table
100-HRV10	10" Horizontal/Vertical Rotary Table
100-HRV12	12" Horizontal/Vertical Rotary Table



100-HRT10 Tilting Rotary Table



100-SI008 8" Super Indexer (8" chuck capacity)



100-TT057 5" X 7" Tilting Table
100-TT710 7" X 10" Tilting Table
100-TT115 10" X 15" Tilting Table



100-CK058 58 piece clamping kit set

Kit contains: 24 Studs – 4 each: 3, 4, 5, 6, 7 and 8 inch long
4 – Coupling Kits, 6 – Flange Nuts, 6 – T-slot nuts, 6 – Forged step clamps, 6 step blocks, 1 wall rack



100-40BHS 3" Boring Head 9 piece set w/ holder



100-40TTS 40-taper Hardened & Ground 9-piece tool holder set for single-end end tools.
Shank sizes: 3/16, 5/16, 3/8, 1/2, 5/8, 3/4, 7/8, 1", 1-1/4

100-JDS40 Jacobs Heavy Duty Drill Chuck with holder, 3/4" capacity



100-40RAA #40-Taper Right-Angle Attachment



100-40QCS Quick-Change tool holder set (master body with/ 15 collets)

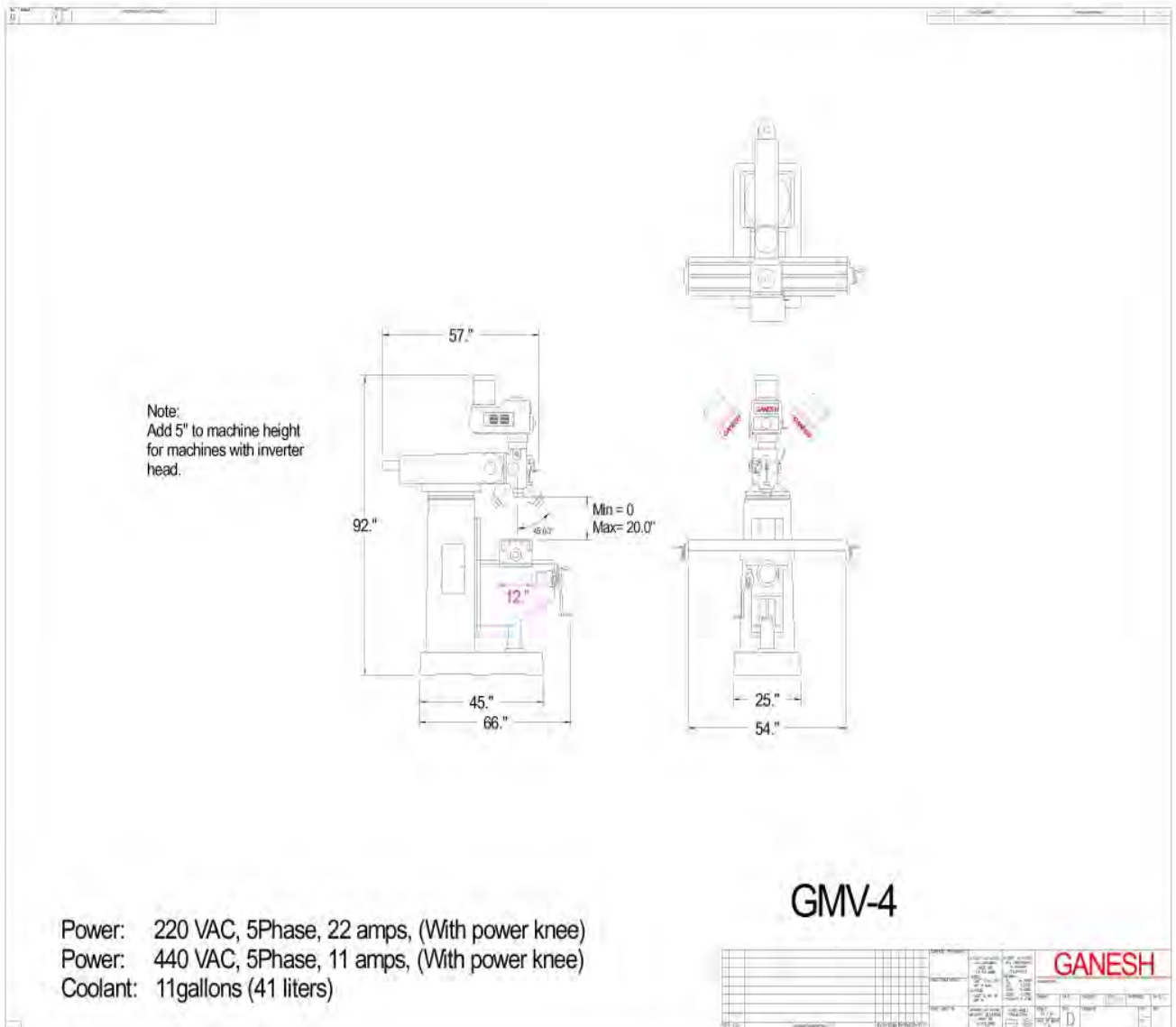


100-DH10 10" Universal Dividing Head with Tailstock



Cool Mist 1-Gallon Capacity Spray Mist
Stainless Steel Tank with 2-Outlets

Floor Plan Layout





GANESH MACHINERY

CELEBRATING 26 YEARS IN BUSINESS – 1985 TO 2010

Training & Travel Package

- Training: Ganesh Machinery Offers 4 Hour in house training for all manual machines. The intense training includes machine set-up, operation, and maintenance. <u>Note:</u> There is no charge for the training program for all new customers.	
- On-Site Training: \$975 per day plus expenses	
- Warranty: 1-year Control and Machine Warranty including Full Parts and Labor. Warranty labor is provided by your local authorized Ganesh Machinery servicing dealer.	
- Service: Your authorized dealer provides local installation, service & training for your new GANESH machine.	
- F.O.B: Machines ship F.O.B. Ganesh Machinery, Chatsworth, CA 91311	
- Payment Terms:	20% down Payment with Purchase Order, Balance due upon receipt, Net 30-days upon approved credit, Leases with \$1.00 buyback upon approved credit
- Delivery Schedule: Stock to 8-weeks delivery. Subject to prior sale.	

Note: TUV & UL ELECTRICALS AVAILABLE FOR AN ADDITIONAL CHARGE

Note: Special financing options available on your approved credit.
Prices and specifications subject to change without prior notice.

Note: Ganesh 30-day satisfaction Guarantee based on normal usage. Does not cover freight, rigging, or installation costs. Machine crashes or abuses are not covered under the Ganesh satisfaction guarantee.

ONE FULL YEAR WARRANTY PROVIDED

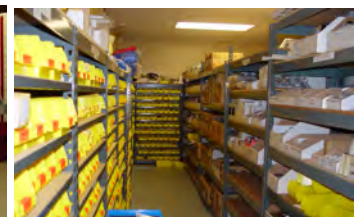
SERVING INDUSTRY SINCE 1985



IN-HOUSE TRAINING CENTER



4000 SQ. FT DEMO READY SHOWROOM



STOCKED SPARE PARTS



GANESH MACHINERY

CELEBRATING 26 YEARS IN BUSINESS – 1985 TO 2010

TERMS & CONDITIONS OF SALE

General

Products and service furnished by us are sold only on the terms and conditions stated herein. Notwithstanding any terms or conditions on Customer's orders, our performance of any contract is expressly made conditional on Customer's agreement to these terms and conditions of sale. All contracts for the sale of products shall be construed under and governed by the laws of the State of California. All orders shall be subject to our acceptance.

Prices & Specifications

All published prices and specifications are subject to change without notice. Unless otherwise specified in writing, all quotations are firm and expire thirty days after date thereof. Unless otherwise stated, all prices, published or quoted, shall be exclusive of transportation, insurance and taxes.

Transportation & Acceptance

We reserve the right to select the means of transportation and routing when Customer's instructions are deemed unsuitable. Risk of loss and/or damage shall pass to Customer upon delivery of the products to the transportation company at the FOB point. Title shall pass to the Customer when products are delivered to the transportation company at the FOB point. All products must be inspected upon receipt and claims should be filed with the transportation company when there is evidence of shipping damage, either concealed or external. The furnishing of a product to the Customer shall constitute acceptance of that product by the Customer unless notice of defect or nonconformity is received by us within ten-days of receipt of the product at Customer's designated receiving address. We may repair or, at our option, replace defective or nonconforming parts after receipt of notice of defect or nonconformity.

Performance

We shall not be liable in any way because of any delay in performance hereunder due to unforeseen circumstance or to causes beyond our control such as, but not limited to, strike, lockout, riot, war, fire, act of God, accident, and subcontractor or supplier delays. We reserve the right to substitute suitable products, when in our opinion such substitution is necessary due to such circumstance or causes. No order may be terminated by Customer except by mutual agreement in writing. Machines are not designed to conform to UL or OSHA Standards. It is the customer's responsibility to verify the electrical standards in their country.

Warranty & Liability for Machine Sales

Our machines, including accessories and spare parts purchased and/or included with the machine sale, are guaranteed to be free from defects in workmanship for twelve months after date of purchase, unless specified otherwise. This warranty is effective only if the necessary information is provided, serial number of machine and nature of defect, and any part claimed defective is returned prepaid to us. No such return will be accepted unless we are first notified of the part to be returned. Upon its proper return to us, we shall repair or replace, at our option, the defective part. This warranty applies only if the products have been operated in accordance with normal procedure, and if no unauthorized repairs have been attempted. This warranty is expressly in lieu of and excludes all other express or implied warranties including, but not limited to, warranties of merchantability and fitness for particular purpose, use or application and all other obligations or liabilities on our part. The remedy of repair or replacement, as provided herein, shall be the buyer's exclusive remedy and will satisfy all our liabilities whether based upon contract, negligence, or otherwise. In no event shall we be liable for incidental, consequential or special damages. Liability to third parties for bodily injury including death relating to our performance or products delivered hereunder shall be determined in accordance with applicable law and shall not exceed the payment, if any, received by us for the product or service furnished.

Warranty & Liability for Accessory & Spare Part Sales

Accessories and spare parts purchased after a machine sale and/or out of the machine warranty period are guaranteed to be free from defects in workmanship for 90-days after date of purchase, unless specified otherwise. This warranty is effective only if the necessary information is provided; original date of purchase and nature of defect, and any part claimed defective is returned prepaid to us. No such return will be accepted unless we are first notified of the part to be returned. Upon its proper return to us, we shall repair or replace, at our option, the defective part. This warranty applies only if the products have been operated in accordance with normal procedure, and if no unauthorized repairs have been attempted. This warranty is expressly in lieu of and excludes all other express or implied warranties including, but not limited to, warranties of merchantability and fitness for particular purpose, use or application and all other obligations or liabilities on our part. The remedy of repair or replacement, as provided herein, shall be the buyer's exclusive remedy and will satisfy all our liabilities whether based upon contract, negligence, or otherwise. In no event shall we be liable for incidental, consequential or special damages. Liability to third parties for bodily injury including death relating to our performance or products delivered hereunder shall be determined in accordance with applicable law and shall not exceed the payment, if any, received by us for the product or service furnished.

Indemnity and Hold Harmless

Customer agrees to indemnify and hold Seller harmless for any and all claims or demands or liability, whether or not Seller has yet to become liable thereon, for any potential, threatened or actual liability, costs, or expenses, arising out of or relating to the sale or use of the equipment which is subject of this sale.

Terms of Payment

All payments for products released and shipped on approved credit accounts shall be due in full thirty days from date of invoice therefore Past Due balances shall be subject to a service charge of 1-1/2% per month. Partial shipments will be billed as made and payments therefore are subject to the above terms. We may cancel or delay delivery of products in the event Customer fails to make prompt payment therefore or in the event of arrearage in Customer's account with us.

Disputes

All disputes under any contract concerning products not otherwise resolved between Customer and we shall be resolved in a court of competent jurisdiction of Los Angeles, California.

Attorneys Fees

Should any legal action or arbitration be brought for the enforcement of this Agreement or any term hereof, or due to any alleged dispute, breach, default or misrepresentation in connection with any provisions herein contained, the prevailing party shall be entitled to its reasonable attorneys' fees, expert witness fees and other costs and expenses, as well as recoverable court costs, incurred in any such action or proceeding and any action to enforce a judgment (including bankruptcy representation) and any appeal, in addition to such other relief, as may be granted by the court.