

**THE MOST EFFICIENT SOLUTION TO IMPROVE PARTS WASHING**  
—— NO MORE CLEANING WITH DIRTY WATER ——

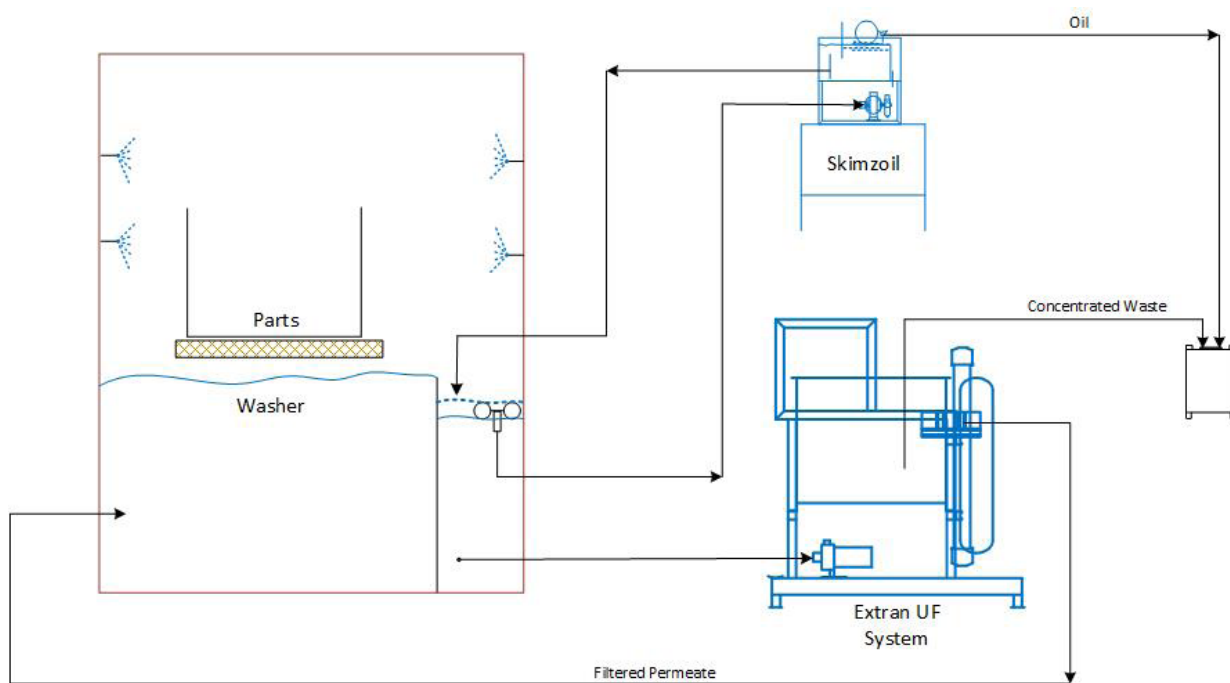


**Before & After Samples**  
Parts Washing Water & Clean Filtered Water

## MEET HIGH CLEANLINESS STANDARDS WITHOUT SACRIFICING PRODUCTIVITY

<u>CHALLENGES WITH PARTS WASHING</u>	<u>WHY IT MATTERS</u>	<u>HOW EXTRAN™ PROVIDES LONGTERM SOLUTIONS</u>
<b>WASHER DUMPING &amp; RECHARGING</b>	Stopping production to dump, clean and re-charge washers means downtime and inefficiency.	EUS prevents buildup of contamination in washers, eliminating the need to frequently shutdown for cleanout and recharge.
<b>OIL CONTAMINATION IN WASH WATER</b>	Oil, coolant and fine particulates on your parts can cause rejects and failed quality inspections.	EUS completely removes emulsified oil and suspended solids from parts washing water to improve cleaning performance and consistency.
<b>DUMPING WASHERS GENERATES EXCESS WASTE</b>	Waste from washers is full of oil and detergents. Disposal can be expensive and throws out valuable chemicals.	EUS technology extends your wash bath life, reducing the amount of waste generated and cleaner wasted.

### PARTS WASH PROCESS FLOW

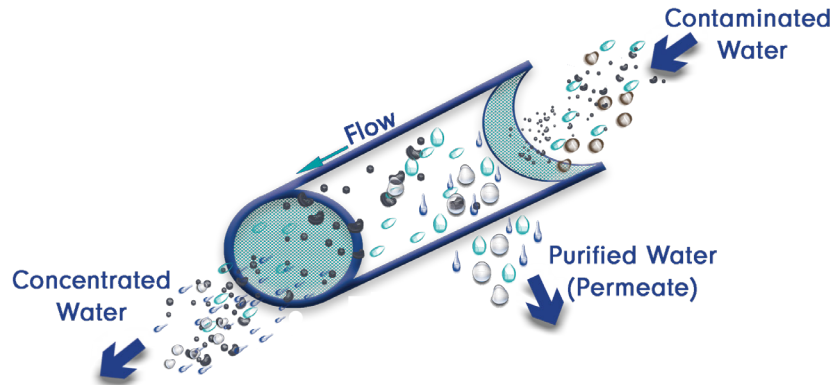


**EUS Removes emulsified oil**

**SKIMZOIL Removes free oil**

# EXTRAN™ TECHNOLOGY

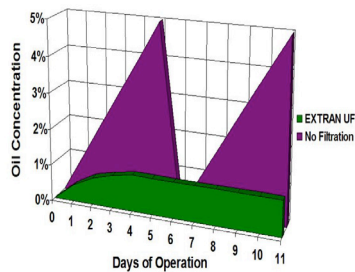
Cellulose Hollow Fiber Membrane



**Before & After Samples**  
Parts Wash Water & Filtered Permeate

## EXTRAN™ HOLLOW FIBER MEMBRANE - MORE THAN A FILTER

The **EXTRAN™ Module** is made with a proprietary cotton-based hydrophilic membrane. The schematic above shows the hollow-fiber membrane filtering contaminated water and separating it into two streams; a purified water stream that may be reused back into the process, while the other contaminated stream becomes more concentrated for disposal. This unique membrane has a very broad range of chemical compatibility and does not foul like conventional ultrafilters, which means **EXTRAN™ DOES NOT REQUIRE ANY MEMBRANE CLEANING**.



**Bath Cleanliness Chart**  
EUS yields consistent cleaning

## EXTRAN™ ULTRAFILTRATION SYSTEM:

- Maintains bath cleanliness
- Extends bath life for your washer
- Reduces dump frequency & waste
- Reduces downtime
- Recycles water and cleaner



## EXTRAN™ ULTRAFILTRATION IS ROBUST ENOUGH FOR YOUR PROCESS

Most conventional ultrafiltration systems require a lot of maintenance and frequent membrane cleaning, generating too much chemical waste and making them difficult to operate.

**EXTRAN™** requires no membrane cleaning and the system is designed for ease of operation in an industrial manufacturing environment. The system is robust enough to filter washers contaminated with oils, coolant, stamping lubricants, drawing oils, metal fines from machining and quench oils from heat treating.

## CONTACT US TODAY

+1 (864) 862-2577  
SEPARATIONDYNAMICS.COM  
info@separationdynamics.com



## GLOBAL INDUSTRIES WE SERVE

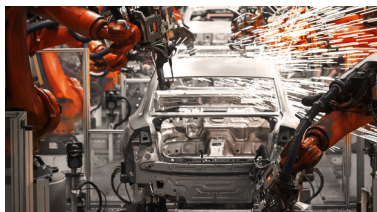
Our robust filtration technology is designed for heavy-duty parts cleaning and has been used over the past 20 years by many of the world's leading manufacturing companies.



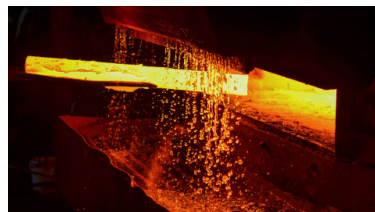
PARTS WASHING



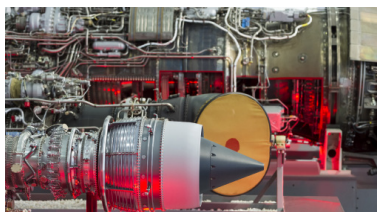
GEAR MANUFACTURING



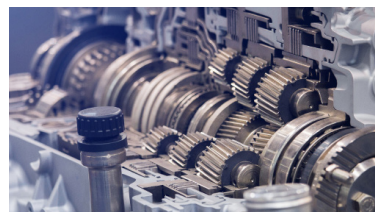
AUTOMOTIVE



HEAT TREATING



AEROSPACE



TRANSMISSIONS



611 South Woods Drive  
Fountain Inn, SC 29644 USA  
info@separationdynamics.com  
**SEPARATIONDYNAMICS.COM**